



HIREACH MATERIAL HANDLING OPTIONS

HOW COMPANIES BENEFIT FROM OWNING MACHINERY
THAT CAN BOTH POSITION PEOPLE AND LIFT LOADS



PEOPLE POSITIONING AND LOAD LIFTING ON A SINGLE PLATFORM

Elliott HiReach material handling work platforms are built to lift both workers and heavy loads, allowing you to get more done with less.

If you've ever sent two trucks to a single job site — one with a bucket aerial lift and the other with a telescopic-boom crane — you might've wondered if it makes more sense to combine people positioning and load lifting on a single platform.

Some personnel-positioning tasks require a basic bucket lift to put a worker or two right where they need to be. And some lifting tasks require sufficient material handling to lift smaller loads into position. When these jobs mix, there's plenty of work for machinery that positions people and lifts loads.

We call these machines Elliott HiReach material handling aerial work platforms. They're built on heavy-duty truck chassis and feature baskets that can hold two or more workers and their tools, boommounted winches that can lift up to 15-tons, and booms that can reach more than 200 feet into the air.

Plus, every Elliott HiReach offers an optional platform-mounted jib winch that allows workers to lift materials from within the platform, acting as an extra set of hands.

HIREACH MATERIAL HANDLING OPTIONS

UNDERSTANDING THE BENEFIT OF A MATERIAL HANDLING AERIAL WORK PLATFORM



Think about the difference between one truck and two. Everything happens twice: capital outlay, personnel costs, branding and painting, maintenance, repairs, fuel, insurance, accident risk, interest costs, rental and leasing fees, and all sorts of other nickel-and-dime expenses. And you have to coordinate getting two vehicles and their operators to the worksite and positioning them appropriately, sometimes in tight spaces.

With a material handling aerial work platform, you're buying one truck with most of the lifting power of a small crane, and adding a rotating and selfleveling basket that can position multiple workers and their tools high in the air. And while a material handling aerial work platform may cost more than a single boom crane or a low-capacity, cherry-picker-style lift, the total cost of ownership can be substantially less than the expense of buying and operating these machines separately.



HIREACH MATERIAL HANDLING OPTIONS

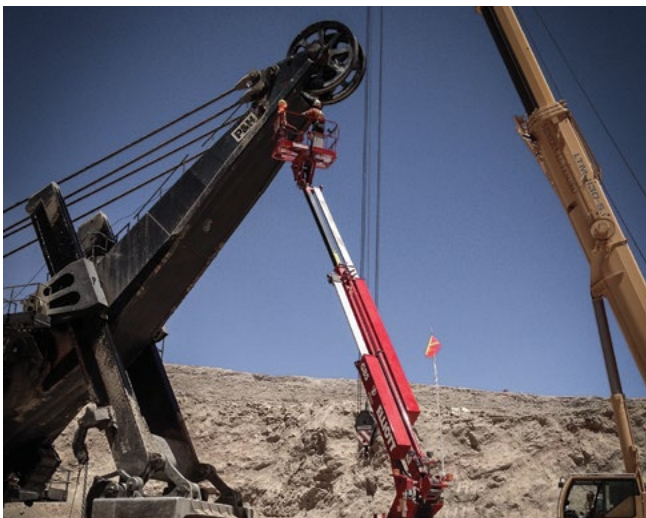
HOW COMPANIES USE MATERIAL HANDLING AERIAL WORK PLATFORMS

How often do companies really need to combine positioning people and lifting loads? Much more than you might suspect. Here are some prominent examples:



ELECTRICAL CONTRACTING

When linemen or workers need to hang cable, install insulators, or maintain electrical systems at height, material handling aerial work platforms can safely lift them to the job site and also provide the ability to lift and hold materials from within the platform using a jib winch.



MINING

Draglines or shovels often need maintenance and repairs while in the mine. Maintenance crews need to be able to quickly deploy an aerial work platform onto the job site and get the work done safely and efficiently, and that means having all the tools they need (access, hand tools, and material handling) on the same vehicle. Being able to safely access this work and handle materials directly from within the platform with a jib winch or with a main boom winch, helps the equipment be more flexible and increases utilization.



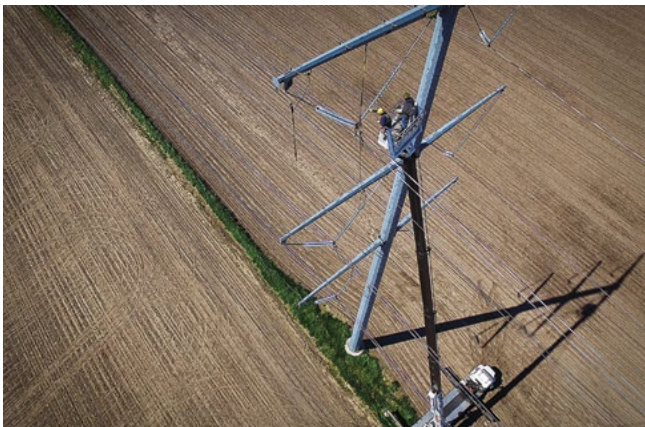
SIGN AND LIGHTING

Installing and servicing building-mounted signs, street lights and billboards all require the ability to lift workers and lift materials on the same jobsite. Being able to safely access this work and handle materials directly from the platform and/or the main boom helps speed up jobs, reduce jobsite congestion in urban areas, and helps companies maximize their equipment budgets.



TRANSPORTATION AND PUBLIC WORKS

Installing and servicing building-mounted signs, street lights and billboards all require the ability to lift workers and lift materials on the same jobsite. Being able to safely access this work and handle materials directly from the platform and/or the main boom helps speed up jobs, reduce jobsite congestion in urban areas, and helps companies maximize their equipment budgets.



UTILITIES

Aerial work platforms can reach more than 200 feet into the air for linemen to construct and repair transmission power lines or towers. Compact 50 and 72 foot machines can lift materials and people in a substation, without the risk of tail swing. Plus, this can be done without performing a time consuming trial lift and proof test which is required when using a crane with a basket.

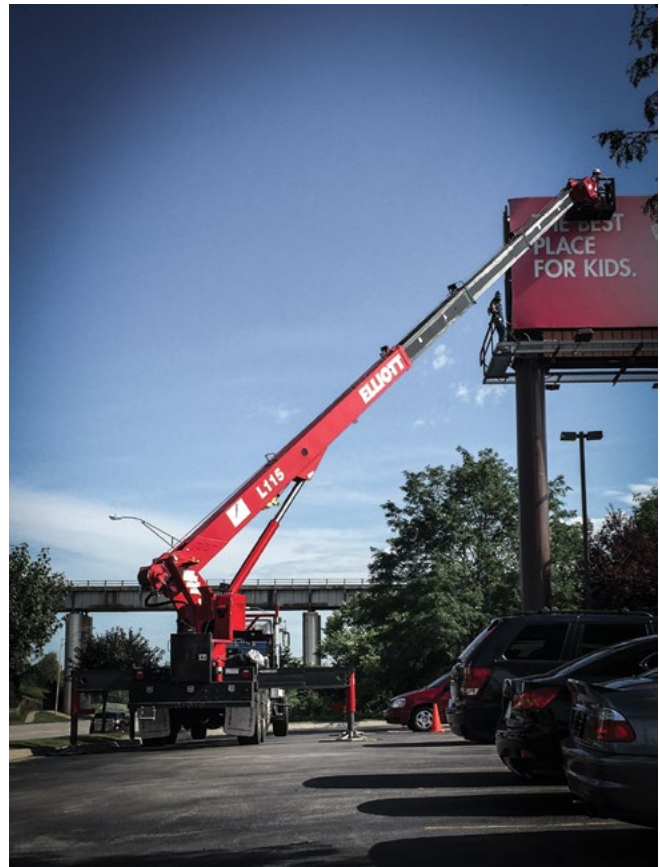
Just about any job that needs multiple workers to complete precision tasks high in the air may be a good fit for a material-handling aerial work platform.

HIREACH MATERIAL HANDLING OPTIONS

WHAT TO LOOK FOR IN A MATERIAL HANDLING AERIAL WORK PLATFORM MANUFACTURER



Elliott Equipment Company has been building truck-mounted lifting equipment for more than six decades. Our experience designing and manufacturing our HiReach and E-Line material handling aerial work platforms informs every feature and option that goes into the equipment we produce.





EXTREME CUSTOMIZING

Elliott HiReach aerial work platforms can be outfitted with main boom and platform mounted jib winches, welding leads, air and hydraulic tool circuits, platform lighting, tool boxes and other accessories to make sure your people have all the tools they need to get their work done safely. An experienced manufacturer will have seen just about every imaginable use of aerial work platforms, and look forward to the challenge of adapting them to jobs they haven't seen before.

COMMITMENT THE ANSI A92.2 DESIGN STANDARD

ANSI A92.2 applies directly to the design of vehicle mounted elevating and rotating work platforms. Strict adherence ANSI A92.2 helps ensure your equipment has been designed to meet stringent safety factors for stability and structural loading. Confirm that your manufacturer makes this commitment; not everyone does.

EXTRA-HEAVY-DUTY COMPONENTS

Outriggers, oversized bearings and heavy-duty fasteners that secure the major components together must be strong enough to remain stable while holding people working in the bucket and while lifting materials with the winch. Be prepared to pay more for more robust equipment built specifically for the multi-functionality of positioning personnel and lifting materials. This investment will repay itself in a long working life with lower repair and maintenance costs due to the robust design.

WARRANTY AND RESALE VALUE

A machine is only useful if it works when you need it. The length and terms of the warranty indicate the manufacturer's confidence in its reliability. Similarly, the resale value of a machine can greatly affect the overall cost of ownership. Machines that have a long and productive expected useful life will have a higher resale value and be more cost effective in the long run.

HIREACH MATERIAL HANDLING OPTIONS

PUTTING IT ALL TOGETHER



There's plenty to think about when considering an aerial work platform. Some things are basic, like considering how high you need to work or how much you need to lift as well as the crane's vertical and side reach. Other decisions are more complex, like figuring out financing and choosing the best mix of capabilities that will fit within your budget. Looking at the full picture of safety, productivity, cost savings and resale value give the best picture of the long term return on investment.

In the end, it comes down to choosing a manufacturer with the track record for building durable equipment customized to satisfy your precise needs and excel at your most demanding jobs.

TO SEE WHICH ELLIOTT UNIT BEST SUITS YOUR NEEDS, REQUEST A CONSULTATION.

We'll help you identify the machine that will streamline your work and enhance your business. Then, get in touch with your nearest distributor to take the first step to adding the right machine for your fleet.

402-592-4500 | sales@elliottequip.com



ELLIOTT
EQUIPMENT COMPANY

Elliott Equipment Company
3514 South 25th Street
Omaha, NE 68105

402-592-4500
elliotequip.com



Built for You